

Annexation Info Session

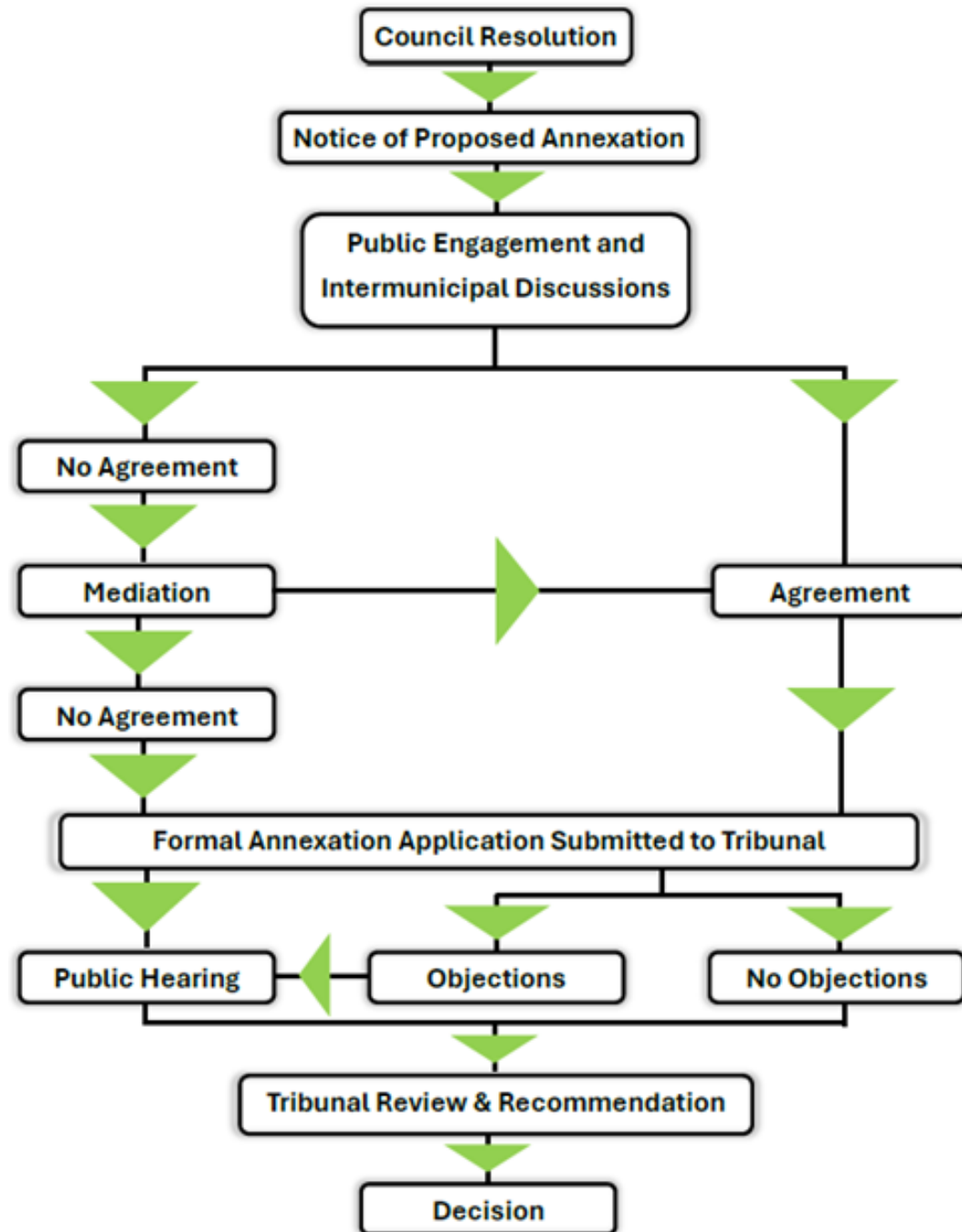
August 14, 2025

What is Annexation?

A provincially regulated process of adjusting the boundaries between two municipalities, resulting in one municipality becoming smaller and the other municipality becoming larger.

The Land and Property Rights Tribunal ('the Tribunal' or 'the LPRT') reviews applications and makes recommendations to the Minister of Municipal Affairs.

Annexation Process



Annexation Rationale

Support for Non-Residential Development

- creating new job opportunities for residents,
- diversifying the economic activities in the region,
- attracting investments from various industries, and
- addressing the need for more highway commercial lands due to the stagnation of many undeveloped lands and lack of action by some landowners.

Increased Housing Options

- providing affordable housing options for new and existing residents,
- enhancing the overall quality of life by offering diverse housing options, and
- supporting sustainable community growth.

Annexation Rationale

Potential for Recreational Facilities

- parks, sports complexes, and community centers

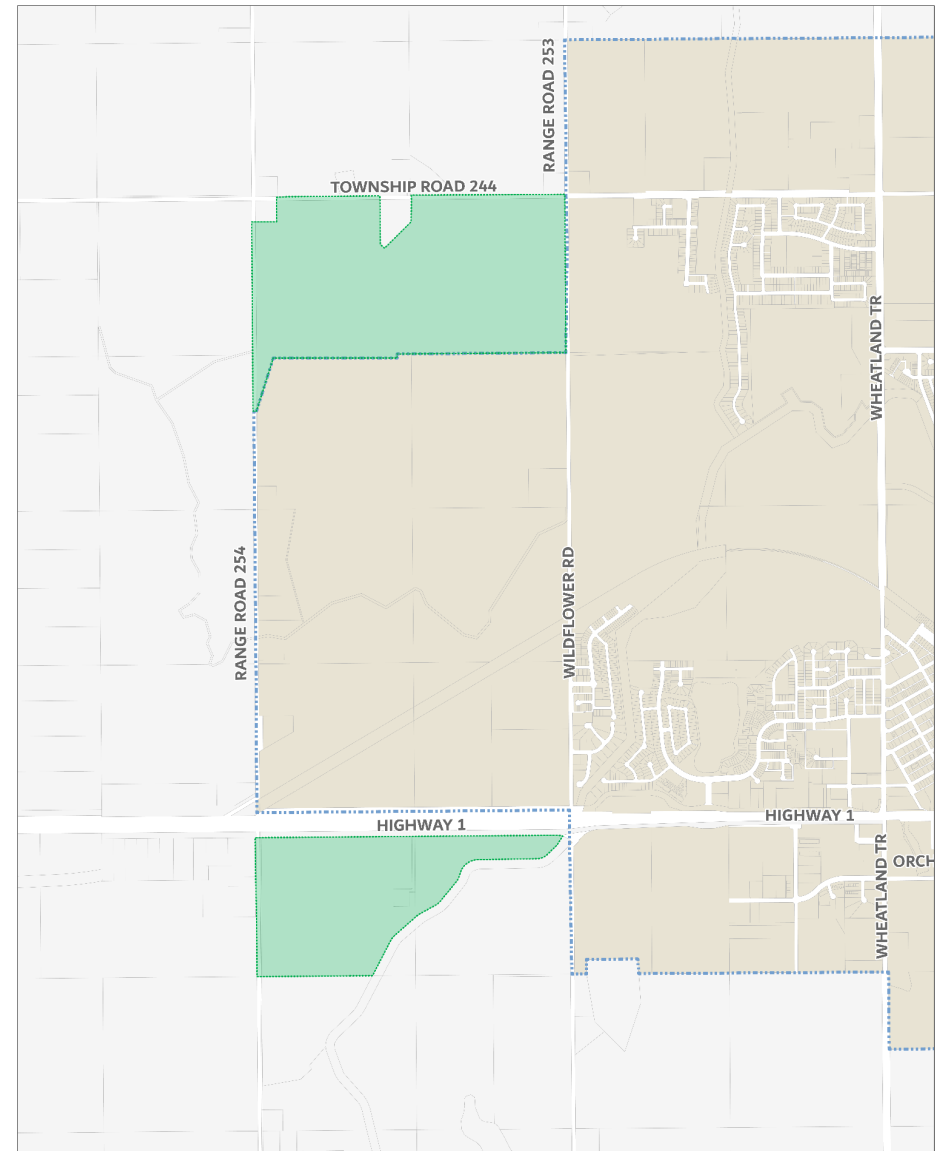
Community and Landowner Support

- strong support from those directly affected by the annexation
- landowners have expressed their desire to be annexed into Strathmore

Community Benefits

- improved infrastructure, increased job opportunities, and a more vibrant local economy

Annexation Area



Legend

- Annexation Areas
- Town Boundary
- Wheatland County
- Town of Strathmore



Next Steps

1

Discussions with
Wheatland
County.

2

Prepare and
submit
application to
LPRT

3

LPRT Hearing for
affected and
interested
parties

4

LPRT makes a
recommendation
to the Minister

5

Province will
make the final
decision by
Order in Council